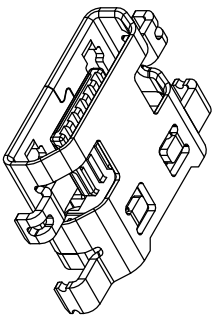
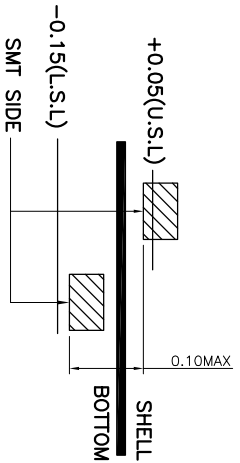
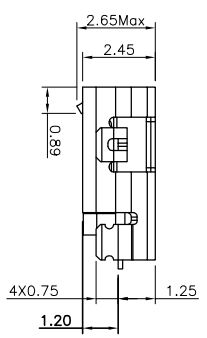


RECOMMEND PCB LAYOUT
TOLERANCE: ±0.05
TOP VIEW



- MATERIALS**
1. HOUSING :THERMOPLASTIC (UL 94V-0) .
 2. TERMINAL : COPPER ALLOY.
 3. SHELL :SUS

- SPECIFICATION**
1. CURRENT RATING : CURRENT RATING: PIN1/PIN5 3.0A , PIN2/PIN3/PIN4 1.0A
 2. DIELECTRIC WITHSTANDING VOLTAGE : 100V AC R.M.S. FOR 1 MINUTE.
 3. INSULATION RESISTANCE : 100MΩ MIN.AT 100V DC.
 4. CONTACT RESISTANCE : 50mΩ MAX.
 5. TOTAL MATING FORCE:3.57 KGF MAX.
 6. TOTAL UNMATING FORCE: 1.0 KGF MIN.0.81~2.05 KGF MIN. AFTER 10000 INSERTION/EXTRATION CYCLES.
 7. OPERATING TEMPERATURE : -20°C TO +65°C.

| REV. | EGN.NO. | MODIFY CONTENT | DATE |
|------|---------|----------------|------------|
| A | | NEW | 2015/08/05 |

| DESCRIPTION OF PLATING ON TERMINALS | | NO. | EXPLAIN |
|-------------------------------------|------------|-----|---------------------|
| 0 | GOLD FLASH | 3 | GOLD 15u" |
| 1 | GOLD 5u" | 4 | GOLD 20u" |
| 2 | GOLD 10u" | H | G/F + TIN, G/F + NI |

| GENERAL TOLERANCE | DWG NO. | JYSA0508-001 | APPD: | WIND | Scale | 1:1 |
|-------------------|-----------|----------------|------------|------|-------|-----|
| X±0.45 | X:±5' | | CHKD: | | UNIT | mm |
| X±0.35 | X:±2' | Title | DR: | | | |
| XX±0.25 | .XX±1' | Part NO. | Date | | | |
| .XXX±0.15 | .xxx±0.5' | JYS-USB120-039 | 2015/08/05 | | | |
| SHEET 1/1 | | | | | | |

JYS 杰宇森电子有限公司
JIE YU SEN ELECTRONIC CO., LTD.